

OPTIONS

RS232 Interface



With this option, HV CONCEPT power supplies can be controlled via RS232.



▶ RS232 BOARD

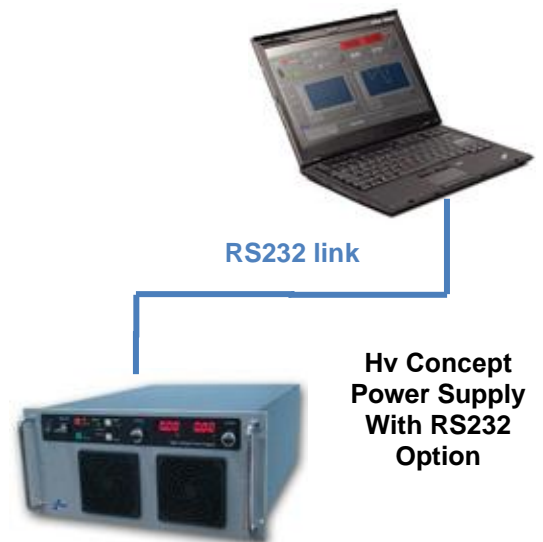
- Specialty design for HV environment
- Multilayer PCB
- Remotely control your generator with PC or device
- Labview runtime available (option)
- 9600 Bauds, full-duplex
- ASCII protocol
- 12 Bits resolution
- 10 Hz Bandwith

The “L.A.B.TEC” (Laboratory Analog Board Technix) is designed to run without damages and control losses in very difficult environments as repetitive electrical arcs, parasitic atmospheres...

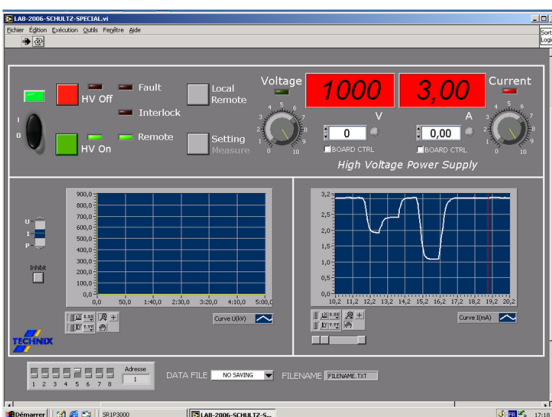
Micro-controller is fully protected from the random events produced on the output voltage and wich are generally responsible for the micro-controllers resets.

The board is made with a shielded structure and with special components acting as a complete protection.

- ▶ **Control via COM-Port**
Any device with a RS232 com port can drive the generator.



▶ Compatible with LABVIEW unttime (optional)



- User gets on his PC the image of the generator front panel
- Settings and controls available like they should be on the front panel
- All the functionality of the standard front panel:
 - Setting and Display of Voltage and Current
 - Indicators: HVon, HVoff, Voltage/Current Regulation, Line, Fault, Interlock, Remote mode
 - Preset & OCP/OCL functions
 - HVon, HVoff control
 - Inhibit
 - Histograms & Measurement savings

Reference: LABVIEW

Reference: RS232